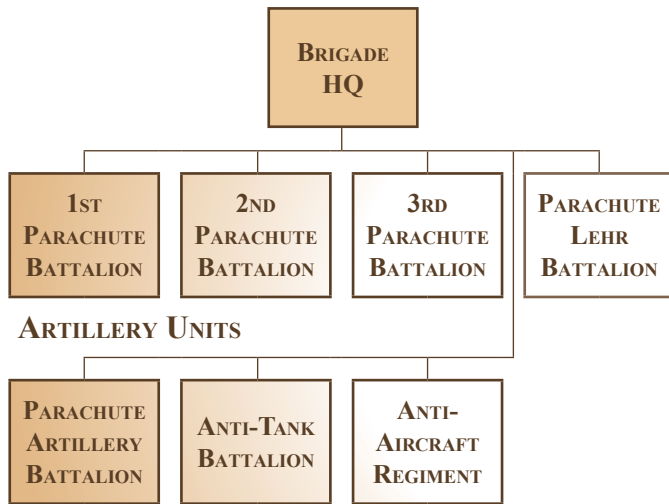


PARACHUTE BRIGADE RAMCKE



BRIGADE HQ

CO + 5 figures, medium radio car, Kettenrad, ADS Kübelwagen

PARACHUTE ANTI-TANK BATTALION

Anti-Tank Company
6 figures, 2 x PaK 36 (37mm) anti-tank gun, 2 x Kettenrad prime mover

Anti-Tank Company
6 figures, 2 x PaK 36 (37mm) anti-tank gun, 2 x Kettenrad prime mover

Anti-Tank Company
6 figures, 2 x PaK 41 (42mm) anti-tank gun, 2 x Kettenrad prime mover

ANTI-AIRCRAFT REGIMENT

2 x anti-aircraft batteries (as on page 21)
Each consisting of 3 x anti-aircraft batteries.

PARACHUTE BATTALION (40 FIGURES)

HQ
CO + 3 figures, medic, 50mm mortar

Parachute MG Company
8 figures, 2 x MMG, 81mm mortar, Pz B 28mm anti-tank gun

Parachute Company
7 figures

Parachute Company
7 figures

Parachute Company
7 figures

Parachute Company
7 figures

Battalion Variations

1st Battalion (Kroh)	Remove one parachute company
2nd Battalion (Heydte)	As diagram above
3rd Battalion (Hubner)	As diagram above and add: Engineer Company 6 figures, flamethrower
Lehr Battalion (Burkhardt)	Remove one parachute coy and add: Artillery Battery 3 figures, 75mm recoilless gun, Kettenrad prime mover Panzerjäger Battery 3 figures, PaK 38 (50mm) anti-tank gun, Sdkfz 10 prime mover Engineer Platoon 2 figures, flamethrower

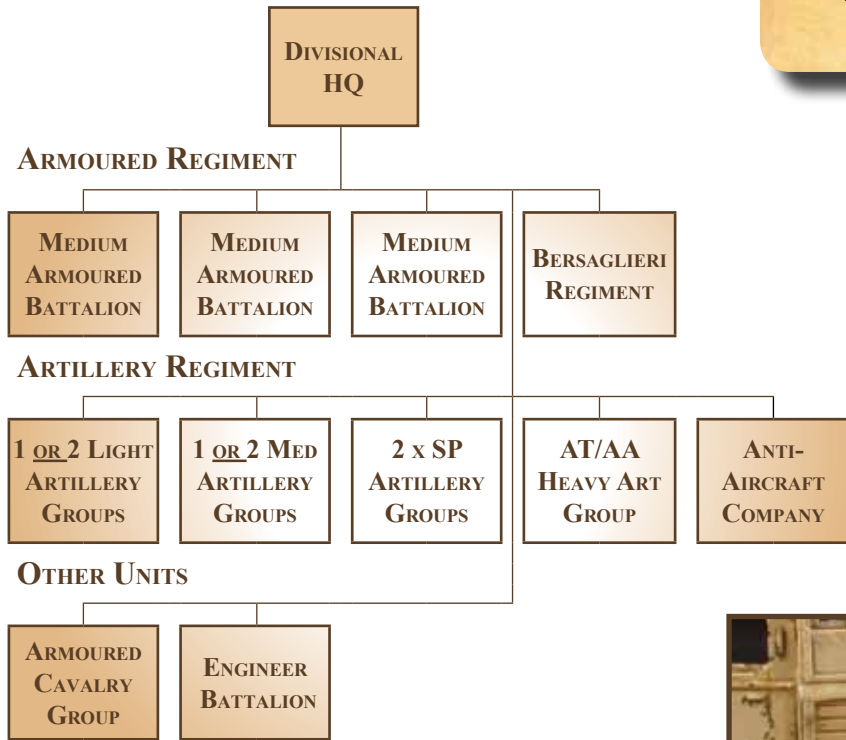
May also add an Italian 47mm anti-tank gun to each battalion, but no extra figures. Crews are from parachute companies.

PARACHUTE ARTILLERY BATTALION

11 figures, 3 x 75mm Geb 36 mountain howitzer, 3 x Kettenrad prime mover, 2 figure OP team, Kübelwagen

 **PANZER ARMY *AFRIKA***
ITALIAN ORBATS
 (AUGUST 1942 - JANUARY 1943)

ITALIAN ARMoured DIVISION
 (132ND ARIETE, 133RD LITTORIO AND 131ST CENTAURO*)



DIVISIONAL HQ

6 figures, command radio truck (or caravan), medium car, motorcycle

Despite their obsolete tanks – the M14/41 being only a marginal improvement on the M13/40 – the two Italian Armoured Divisions were crucial elements in Rommel's army, providing flank cover for the Afrika Korps at Alam el Halfa and half the tank strength of each German/Italian armoured battlegroup at El Alamein. Armoured battalions struggled to reach full strength and numbers soon declined in action, falling to below the strength of one company during the pursuit, until reinforced by elements of the newly-arrived Centauro* Armoured Division in mid November.

Right: The commander and his staff group can provide an HQ for all the Italian divisions and large raggruppamenti (battlegroups).

Below: This Divisional HQ has a commander's caravan mounted on a Lancia heavy truck. Monty used an identical captured bodywork mounted on a British six wheel chassis.

